

A Body Fluid Control

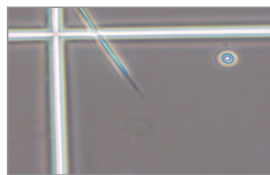


Cell-Chex is a multi-level manual body fluid control that allows the clinical laboratory to verify the accuracy of hemacytometer cell counts, urate and CPPD crystal identification and manual WBC differential procedures.

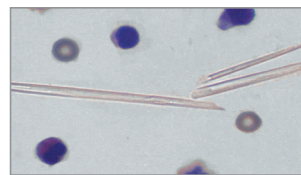
5-Part Differential

The white blood cells in Cell-Chex are human to better resemble patient samples. When stained in the same manner as a patient sample, the technologist can differentiate granulocyte, lymphocyte and monocyte populations. The differential assay offers polymorphonuclear and mononuclear values and 5-part white cell differential values. Cell-Chex is a control appropriate for all body fluids.

Stability	
Closed-vial	6 months
Open-vial	30 days



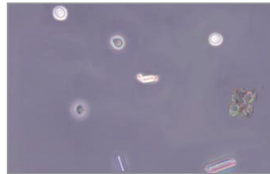
L1-UC Hemacytometer



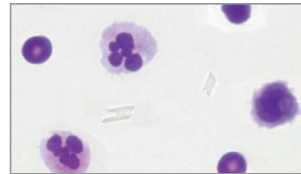
L1-UC Cytocentrifuge



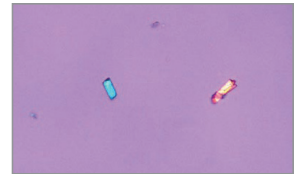
L1-UC Polarizing Scope



L1-CC Hemacytometer



L1-CC Cytocentrifuge



L1-CC Polarizing Scope

Crystals can be easily identified without interfering with RBC and WBC counts using a hemacytometer or WBC differential counts using a cytocentrifuge smear.

Typical Assay Values

Level 1 (WBC, RBC)/ μ L	10	Mono %	6
Level 2 (WBC, RBC)/ μ L	100	Eos %	3
Neut %	75	Baso %	1
Lymph %	15		

* Urate crystals in Level 1-UC
* CPPD crystals in Level 1-CC

STATS®

Interlaboratory Quality Control program features online accessibility with enhanced real-time reporting and improved account management capability. Open to all customers at no charge, the Streck STATS program includes personalized, easy-to-read reports that detail performance, identify trends and facilitate real-time prompt corrective action. More information can be found at www.streck.com.

Product		Catalog #
L1-UC, L1-CC, L2	3 x 2.0 mL	212431
L1-UC, L2	4 x 2.0 mL	212420
L1-UC, L2	12 x 2.0 mL	212425
L1-CC	2 x 2.0 mL	212429
L1-CC	6 x 2.0 mL	212430
L2	6 x 2.0 mL	212424
L1-UC	6 x 2.0 mL	212432